

# MAASiFiE - Mobility as a Service for Linking Europe

- CEDR Transnational Road Research Programme
- Duration: 06/2015 – 07/2017
- Organizations: VTT Technical Research Centre of Finland Ltd. (coordinator), partners: AustriaTech (Austria) and Chalmers University of Technology (Sweden)

- Main content:

- Business models
- Stakeholder roles and responsibilities
- Technology
- Impact assessment
- Roadmap 2025

***austriatech***



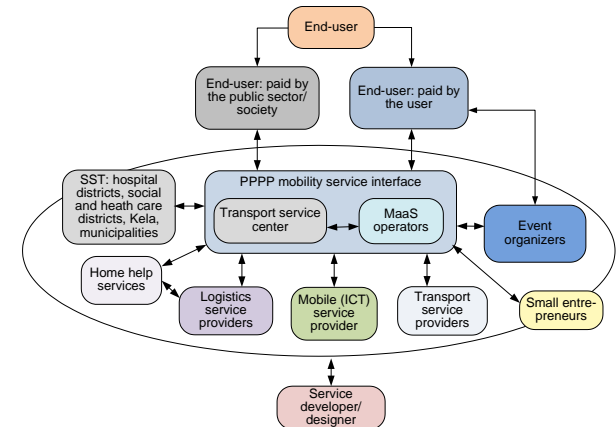
**CHALMERS**  
UNIVERSITY OF TECHNOLOGY

- Contact: Jenni Eckhardt, VTT, [jenni.eckhardt\(at\)vtt.fi](mailto:jenni.eckhardt(at)vtt.fi)

[www.vtt.fi/sites/maasifie](http://www.vtt.fi/sites/maasifie)

# Mobility as a Service concept - promoting service and livelihood development in rural areas (Rural MaaS)

- Research programme: Ministry of agriculture and Forestry of Finland, The Development Fund for Agriculture and Forestry
- Duration: 05/2016 – 06/2017
- VTT (coordinator) and Lappeenranta University of Technology
- Main content:
  - Vision for MaaS in rural areas
  - Recognize emerging business models
  - Recommend measures for the development of mobility regulation
- Contact: Jenni Eckhardt, VTT, [jenni.eckhardt\(at\)vtt.fi](mailto:jenni.eckhardt(at)vtt.fi)  
<https://www.vtt.fi/sites/maaseutumaas/>



# Smart Solutions for Integrated Regional Mobility Services ("ALPIO")

- The Finnish Innovation Fund Sitra funding call for regional mobility
- Duration: 05/2018 – 10/2019
- Regional pilots:
  - Combine public transport and passenger transport services
    - Health and social services transportation
  - Demand-responsive transport services
- Companies work on creating a digital platform
- VTT performs impact assessment
  - Contact: Jenni Eckhardt, VTT, jenni.eckhardt(at)vtt.fi

<https://www.sitra.fi/en/projects/public-private-mobility-services-offered-side-side/#what-is-it-about>

# Rural transport and mobility ("MaasDigiboksi")

- Funding: Rural Development Programme for Mainland Finland
- Duration: 1/2018–2/2020
- Partners: University of Vaasa/ Levón Institute and VTT
- National communication project:
  - Webinars, presentations, texts etc.
    - Changes in transport and mobility sector affecting rural areas
    - Digitalization and legislation
    - Main target group: SMEs in rural areas
- Contact: Heli Siirilä, University of Vaasa, heli.siiirila(at)uva.fi  
Jenni Eckhardt, VTT, jenni.eckhardt(at)vtt.fi

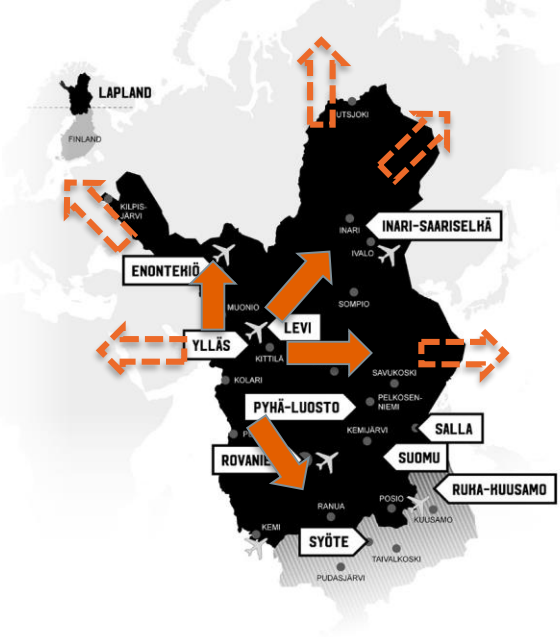


**MAASEUDUN  
KULJETUSTEN  
JA LIIKKUMISEN  
DIGIBOKSI**

<https://www.vtt.fi/sites/maasdigiboksi/>

## Open Arctic MaaS #ArcticMaaS

- Enabling rural MaaS and sustainable growth of tourism in Lapland
  - Area of ~100 000 km<sup>2</sup>
- Joint effort to make mobility as easy as possible
  - 11 remote travel destinations joining their resources to improve internal accessibility and digital transport service level
- Up-scale deployment towards open and shared mobility platform
  - by utilizing and further developing common open source public transport information systems



### Open Arctic MaaS core team

The Multidimensional Tourism Institute MTI, University of Lapland

Maria.Hakkarainen (at) ulapland.fi  
Jouko.Nuottila (at) ulapland.fi

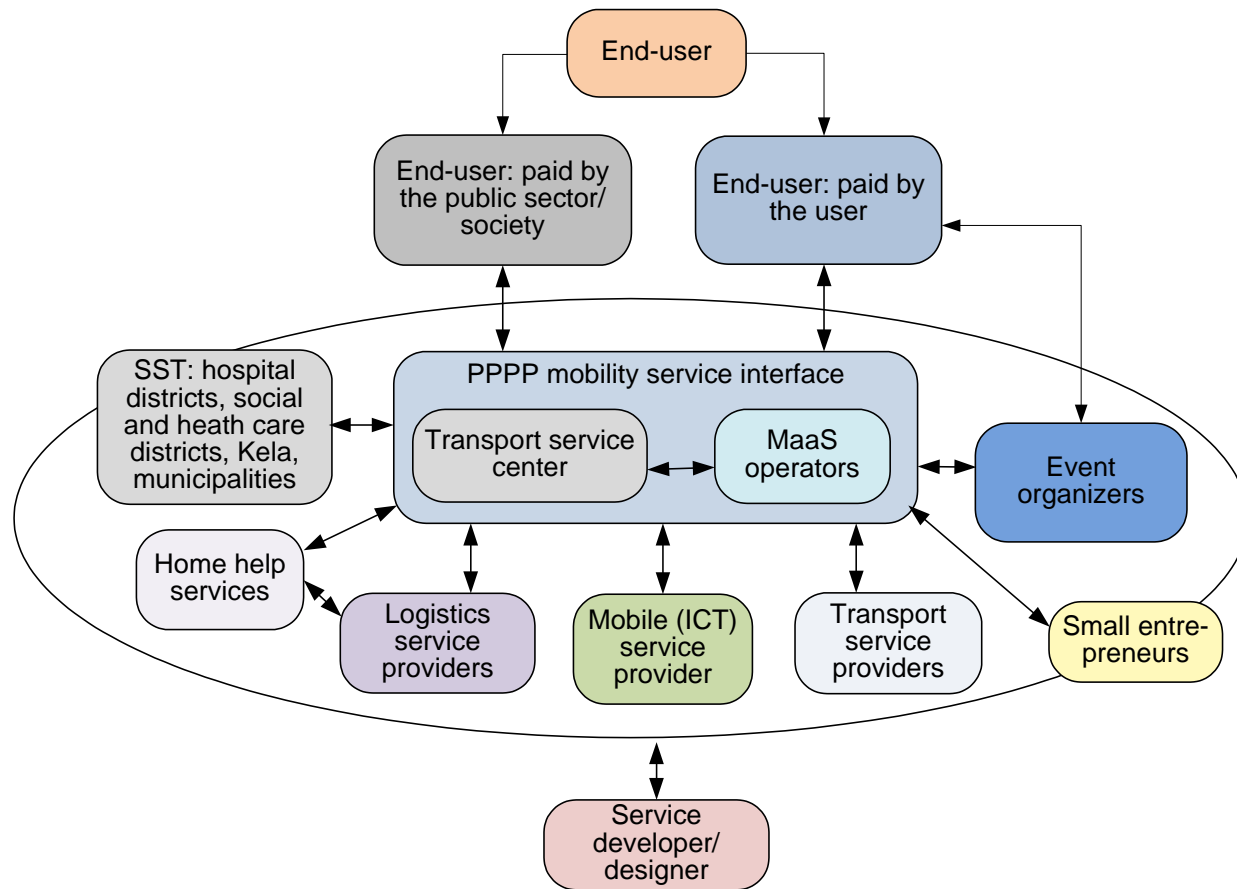
VTT Technical Research Centre of Finland Ltd

Tuomo.K.Kinnunen (at) vtt.fi  
Olli.Pihlajamaa (at) vtt.fi

Ylläs Travel Association

Hanna.Ylipiessa (at) yllas.fi  
Tea.Koskela (at) yllas.fi

More: [www.arcticmaas.fi](http://www.arcticmaas.fi)



Translated from: Eckhardt, J., Nykänen, L., Aapaoja, A. & Niemi, P (2017). Liikkumispalvelut maaseudun elinvoimaisuuden ja saavutettavuuden mahdollistajana. VTT Research Report VTT-R-03429-17, <http://www.vtt.fi/sites/maaseutumaas>